



Strathmore ONLINE WORKSHOP SERIES

PAINTING THE SEASONS WITH GOUACHE

with TiinasDiary

LESSON 2: WARM SUMMER SUNSET



SUPPLIES:



Strathmore 500 Series Ready Cut Watercolor Paper, Hot Press, 5"x7"



Maimeri Gouache



Princeton Velvetouch Brushes





STEP 1: CREATE A SKETCH

To map out our piece, I'm sketching the most important areas in my painting. This not only helps you plan ahead and get a feel for the painting topic but also makes it easier to divide the painting into sections when you actually start adding color to your paper.



STEP 2: UNDERPAINTING

Creating an underpainting layer with watered-down gouache helps you find the correct colors on top and create a uniform color scheme for your painting. I always choose a color that matches the color of the light in my painting, and I most often go for warm yellows.



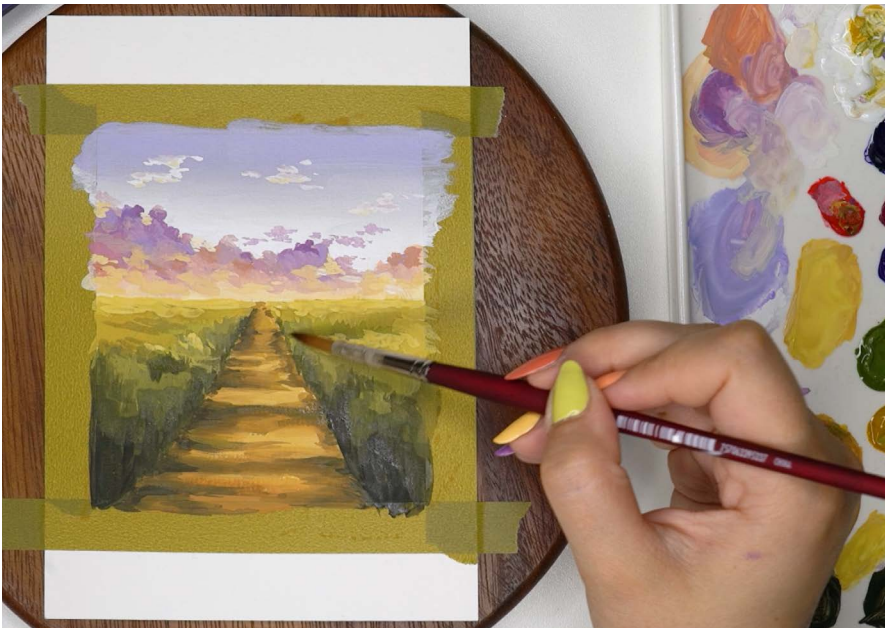
STEP 3: SKY AND CLOUDS

First, with a Filbert brush, I'm creating a smooth purple-blue gradient for the sky, working on small sections and with each layer adding more white. For the dreamy loose clouds, I used a round brush to add colors, making the tones warmer closer to the horizon line.



STEP 4: PATHWAY

For the pathway, I mainly used three tones of brown, mid-tone for the base, lighter tone for highlights, and darker brown to create darker shadows, especially on the sides of the pathway, blending everything together softly. To build a warmer atmosphere for the whole painting, we are adding lots of yellow ochre throughout the colors.



STEP 5: ADDING DEPTH WITH THE FIELD

Painting the field around the pathway will bring this painting to life. For the bottom of the field I chose dark tones and near the horizon line, I went for very light yellow tones to accentuate the look of the warmest summer sunset. I blended the colors together to make the field more realistic but left it more loose to still keep in some natural texture.



STEP 6: INTRICATE DETAILS

While still keeping the style loose, we are working on the sharper details next. I added tall grass to my pathway with a warm, lighter green color, a small brush, and relaxed brush strokes. I mostly focused on the bottom of the painting, leaving the back without any intricate details. While focusing on details, I also added a few dotted details in the pathway to create texture and painted a very simple treeline to the horizon line.



STEP 7: FLOWERS

To finish off this painting, I'm adding tiny white flowers across our field to make it look extra magical and dreamy. Again, like with the grass, I'm leaving the back of the field less distinct and focusing on the foreground with the more precise and sharp flowers. This is the part where you can use your imagination and add any colors you want, or paint more specific flowers, like daisies or sunflowers!

FINISHED IMAGE

