



# Strathmore 2023 ONLINE WORKSHOP SERIES

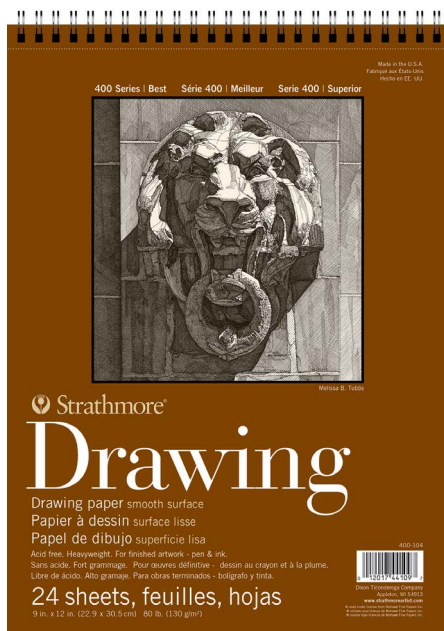
## RENDERING THE HUMAN FACE WITH DIFFERENT MEDIUMS

with Hazylle Mae

### LESSON ONE: PORTRAIT SKETCHING - THE STRUCTURES OF THE HEAD



#### SUPPLIES:



Strathmore 400 Series Drawing, Smooth Surface, 9"x12"



Lyra Rembrandt Art Design Graphite Pencil Set



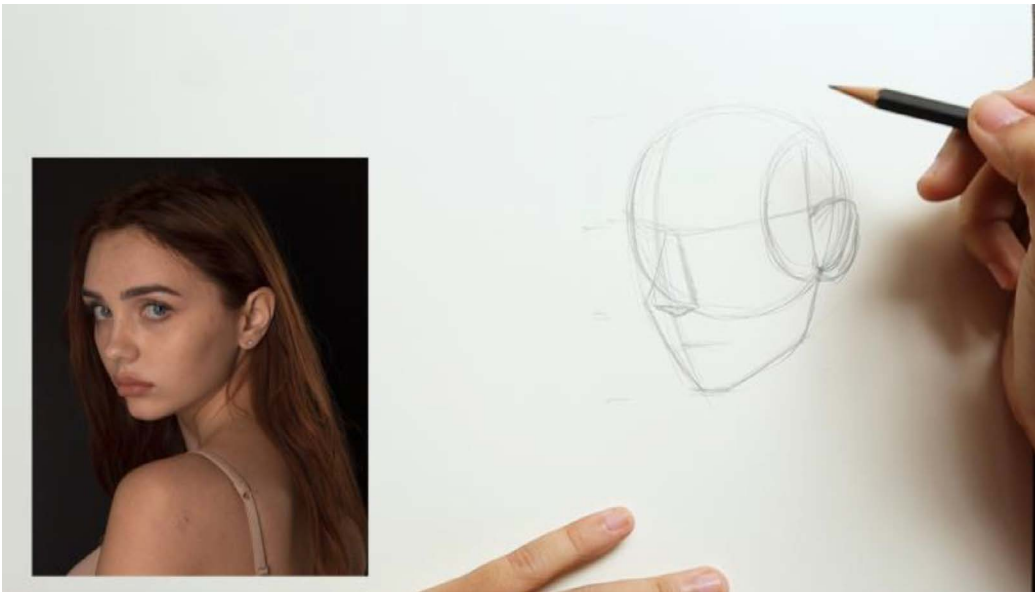
Lyra Orlow-Techno PVC-Free Eraser

## REFERENCE IMAGE





We will start our portrait learning by studying the basic structures of the head and features of the face. A solid foundation in understanding human anatomy will help immensely as we move to finished portrait drawing and painting in subsequent lessons.



### STEP 1:

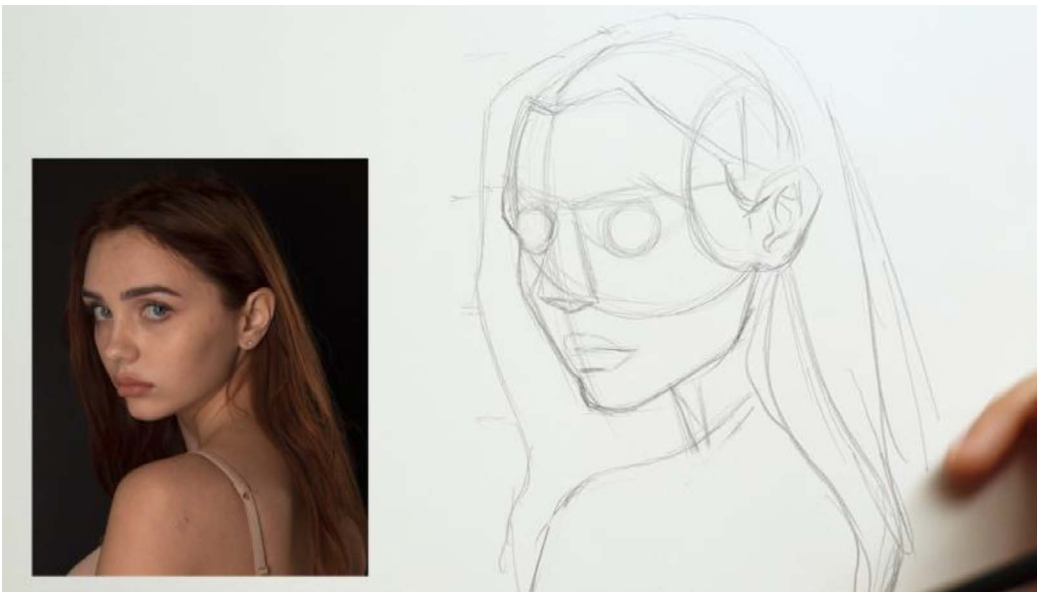
Draw the structure of the head using circles and lines to indicate where prominent shapes and features fall.

Pay attention to the parts that we can't see like the roundness of the top of the skull and its flat sides where the ear rests.



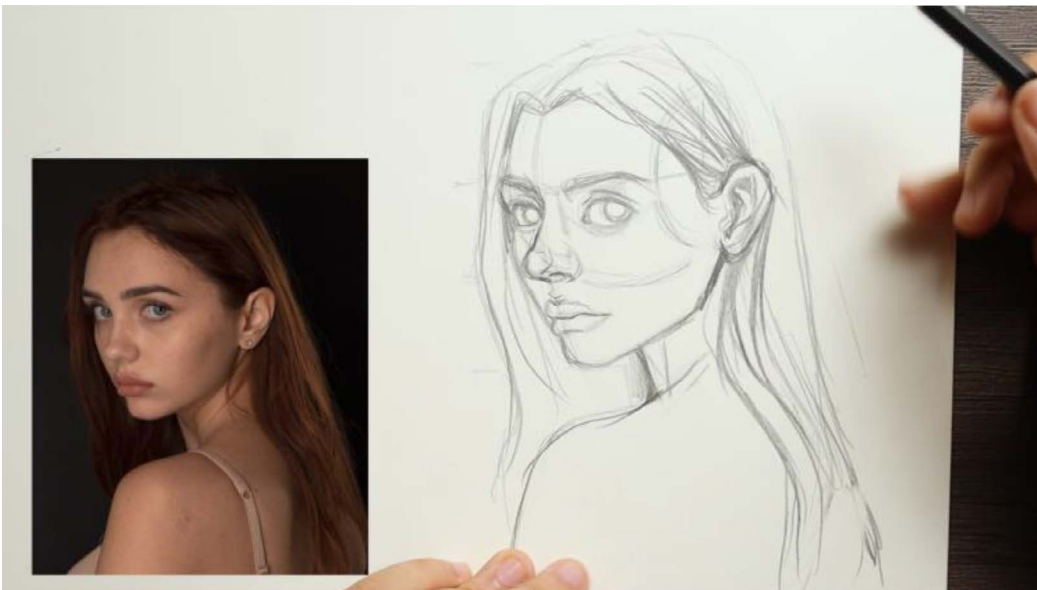
### STEP 2:

Start placing the facial features on the basic head structure. Keep in mind where the planes of the face sit, especially the parts that hold the eyeballs.



### STEP 3:

Start to mold the profile into the silhouette that you see in the photo. Do the same thing to the hair but keep in mind how the volume of it will look on top of the skull.



### STEP 4:

Start to add detail to the features by studying and replicating the reference photo. Pay attention to how her individual features are special and try to translate those qualities into your sketch.



### STEP 5:

Clean up your sketch and add in the final darkest lines to get it ready for shading.

## FINAL IMAGE



We'll refine our drawing then add details and shading in the next lesson.