



Strathmore 2023 ONLINE WORKSHOP SERIES

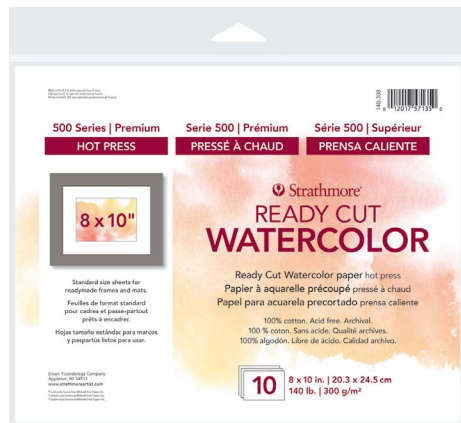
RENDERING THE HUMAN FACE WITH DIFFERENT MEDIUMS

with Hazylle Mae

LESSON FOUR: PAINTING THE FEATURES OF THE FACE WITH GOUACHE



SUPPLIES:



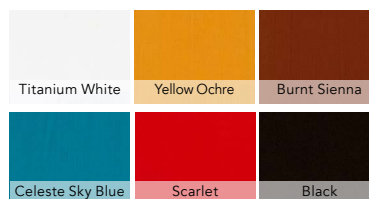
Strathmore 500 Series Ready Cut Watercolor

Hot press, 100% cotton, 8" x 10"



Mameri Gouache

Hazylle has the Mameri Set of 12 colors and uses the following colors in her lessons:



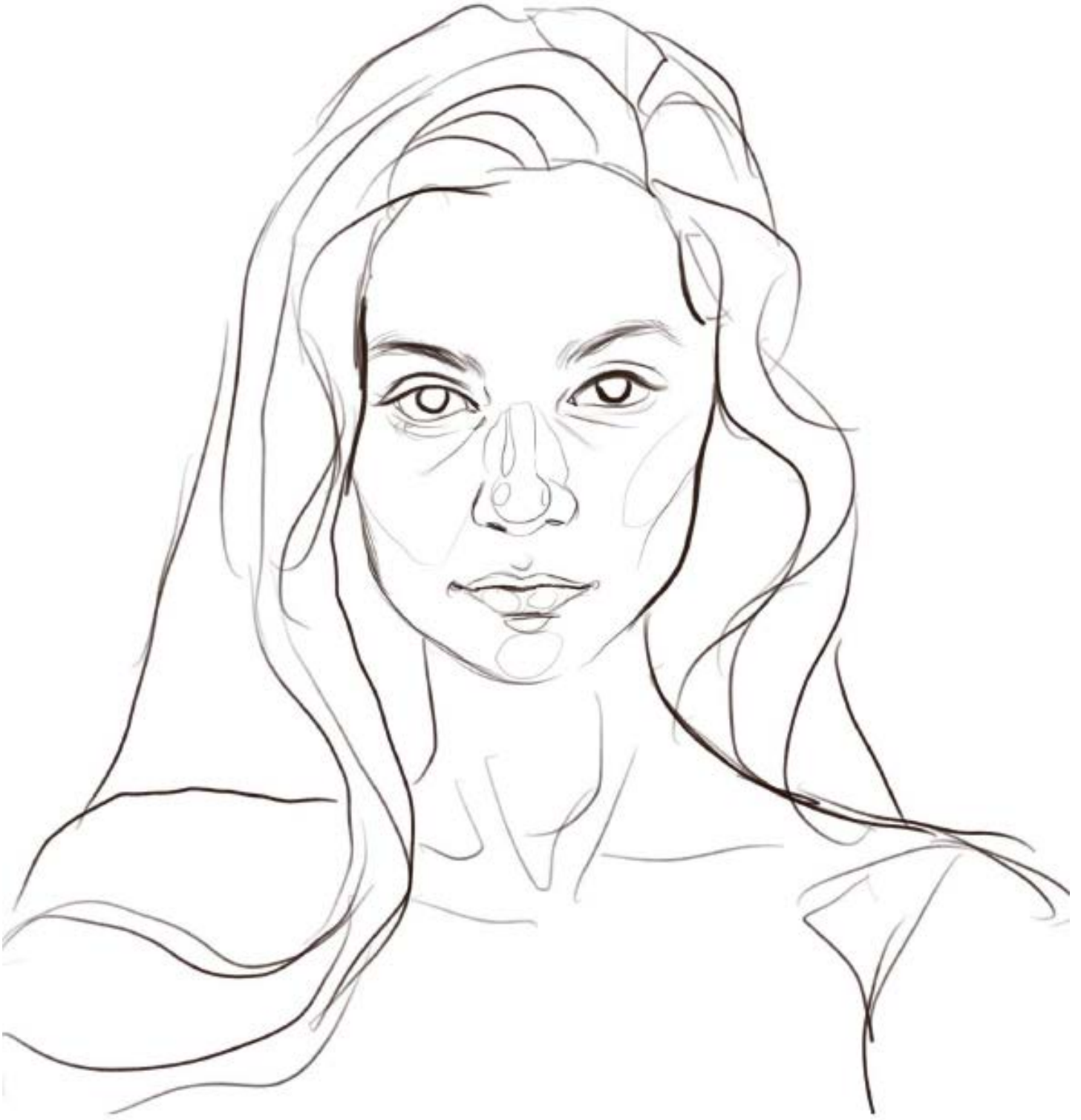
Princeton Velvetouch Brushes

Brush set includes:
Round 4, Long Round 8,
Angular Shader 3/8", Wash 3/4"

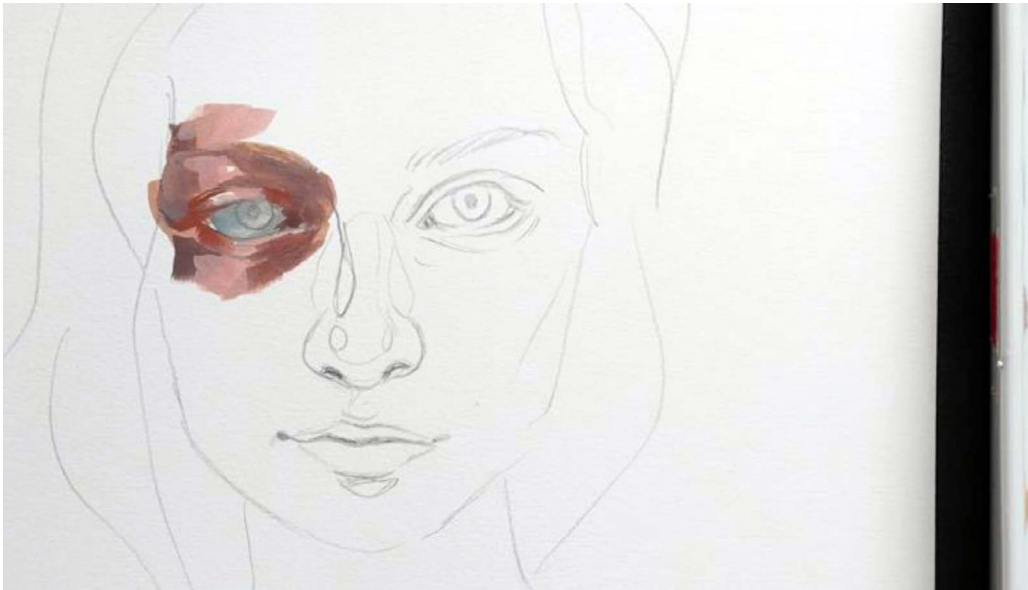
REFERENCE IMAGE



LINework FOR TRACING



We will explore the qualities of gouache and how to navigate them when approaching a portrait painting.



STEP 1:

Using the angled brush, roughly block in the colors of the eye. Keep the paint only slightly thicker than watercolor.



STEP 2:

Using the smaller round brush, mix and add in more transition colors to your eye.



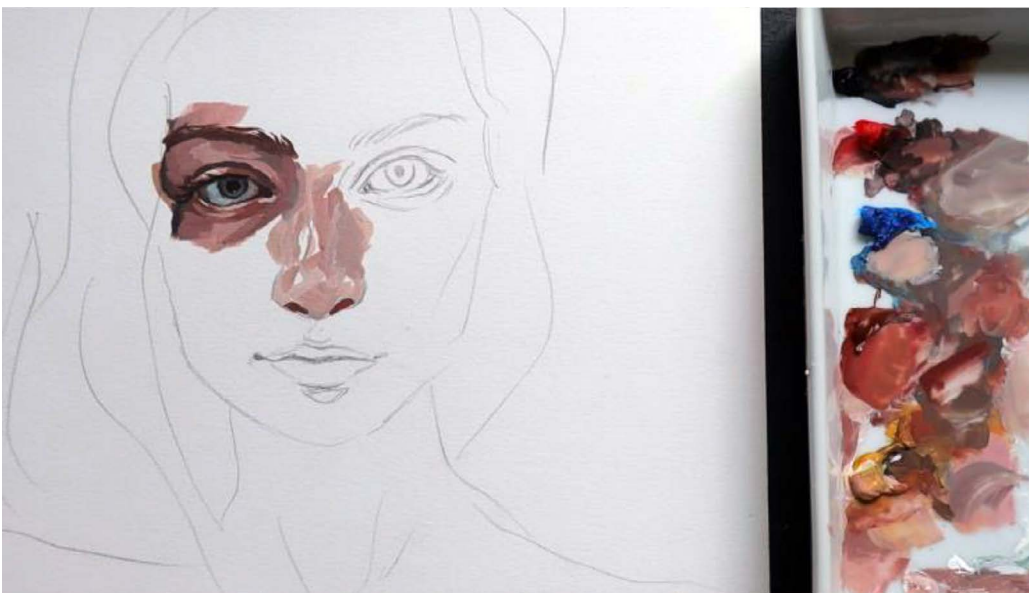
STEP 3:

With the same round brush, add in the final details of the eye with the paint being thicker than the previous layers.



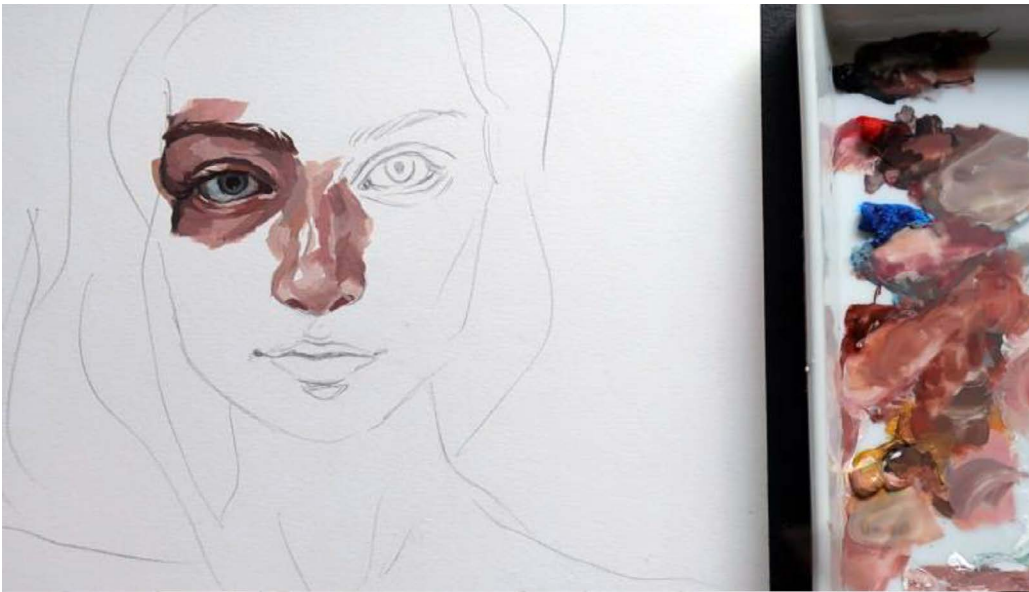
STEP 4:

Using the angled brush, block in the midtones and shadows of the nose with watery paint.



STEP 5:

Using thicker paint this time, add more transition colors.



STEP 6:

Blend in the details and finish them off with thick paint.



STEP 7:

With the round brush, draw in the darkest points in her lips with pure black.



STEP 8:

Slowly add more red and burnt sienna to your black as you move further out from the mouth line.



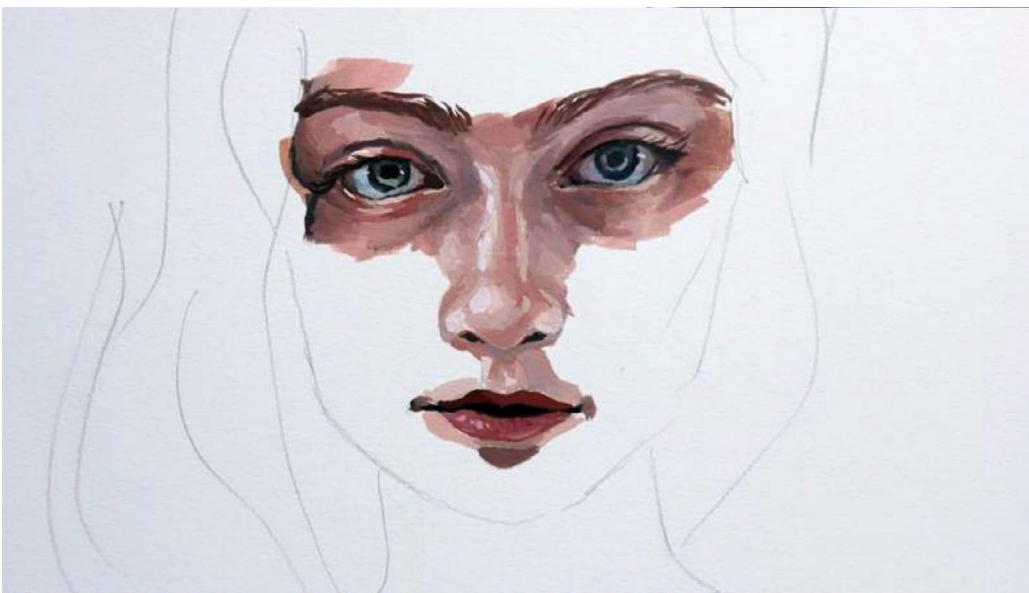
STEP 9:

Keeping the transitions of the values in mind, add in the brightest parts of her lips.



STEP 10:

Paint in the skin around her mouth so the difference in the values isn't so jarring. Add in the final details.



STEP 11:

Using the concepts and techniques of the first three features, finish off the other eye to complete her features.

FINISHED PIECE

