



Strathmore 2023 ONLINE WORKSHOP SERIES

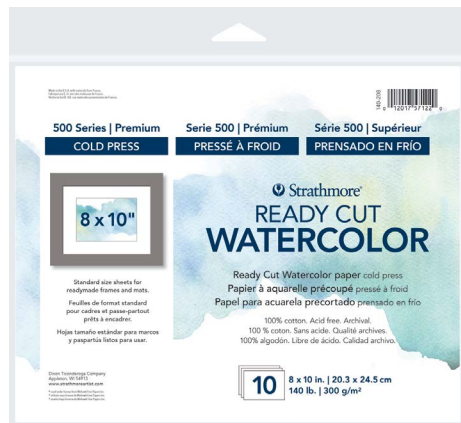
RENDERING THE HUMAN FACE WITH DIFFERENT MEDIUMS

with Hazylle Mae

LESSON THREE: PAINTING A PORTRAIT WITH WATERCOLOR



SUPPLIES:



Strathmore 500 Series Ready Cut Watercolor cold press, 100% cotton, 8 x 10"

MaimeriBlu Watercolor

Hazylle uses a half pan set of 12 colors, but MaimeriBlu tubes can also be used. Hazylle uses these colors in this lesson:



Princeton Brushes*



Princeton Neptune Travel Round Brush Size 4



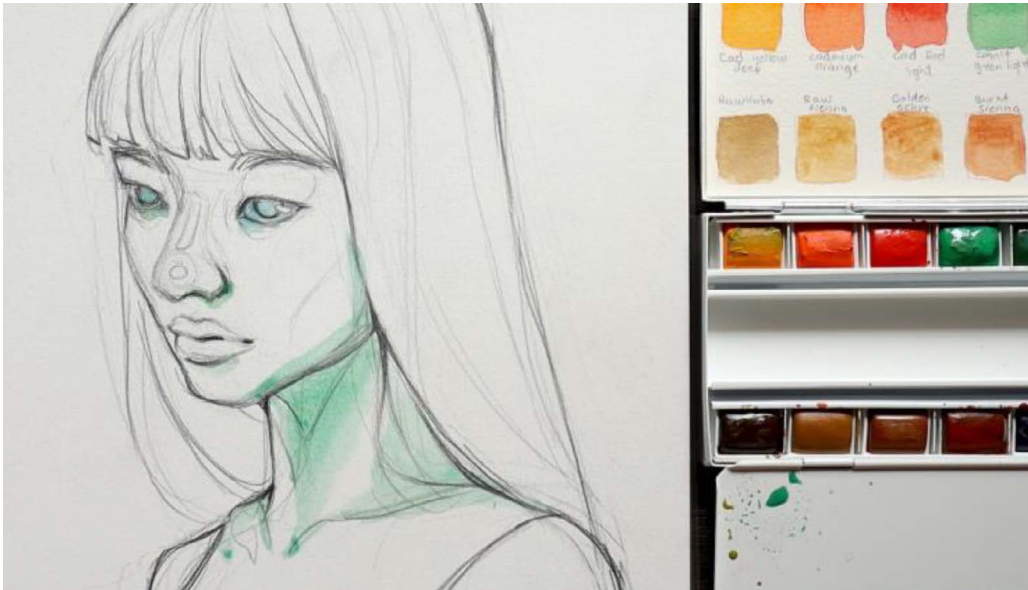
Princeton Aqua Elite Round Brush Size 10

*Any Princeton Aqua Elite, Neptune, Velvetouch or Heritage Round Size 10 and 4 will work for this lesson.

LINWORK FOR TRACING

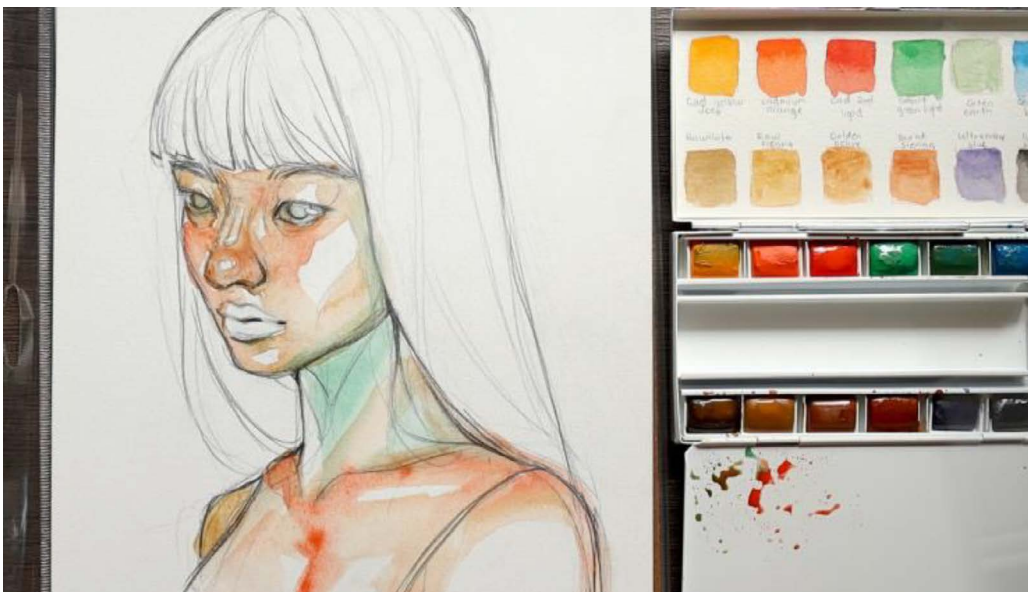


Together we will paint a watercolor portrait that highlights the transparency of the medium and at the same time learn to layer our paints to eventually get the values we want.



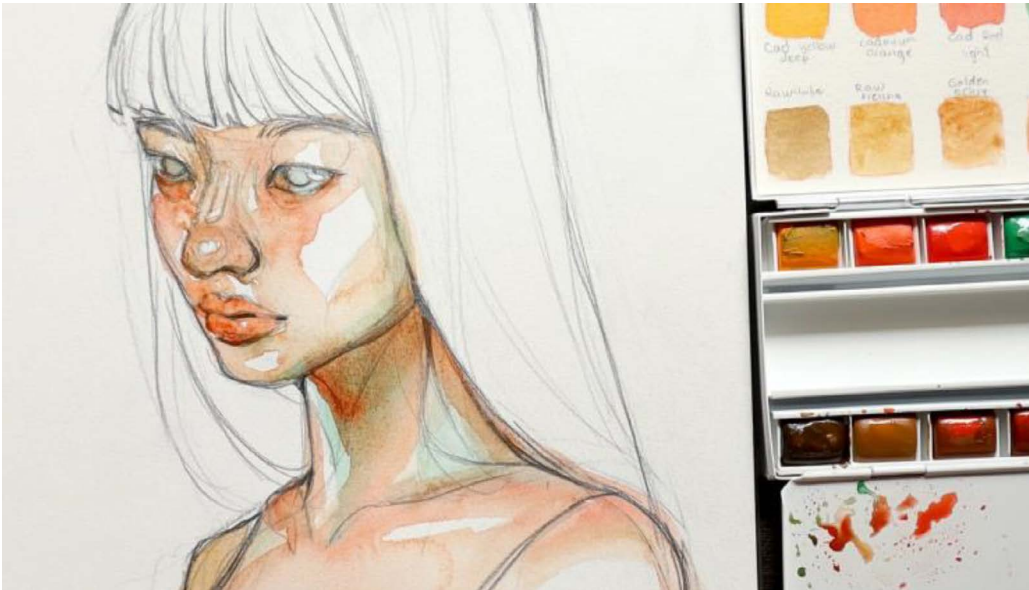
STEP 1:

Using the number 10 round brush, block in the shadows of the face and neck with cobalt green light which is a very cool green. Don't forget the eyeballs.



STEP 2:

Use warmer colors like cadmium red light, burnt sienna and raw umber on top of the cool ones. Use very loose paint to allow your layers to be more transparent. Add a warm red to some points of the face like the nose and the cheeks.



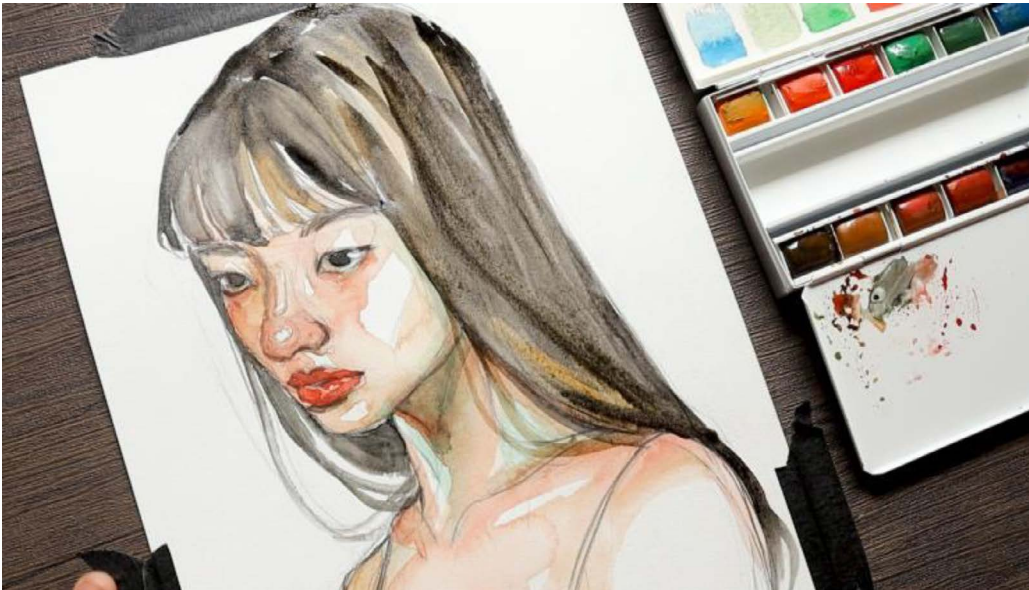
STEP 3:

Use the Cadmium red light for the lips and on the underside of her eyes.



STEP 4:

Using the Princeton number 4 round brush, use black to add definition to the eyes and lips.



STEP 5:

Going back to the larger brush, paint in her hair using a mixture of the black for the darker hair strands and the raw umber on the highlighted parts of the hair.



STEP 6:

Use the number 4 round brush to clean up the lines and add in the final details.

FINISHED PIECE

